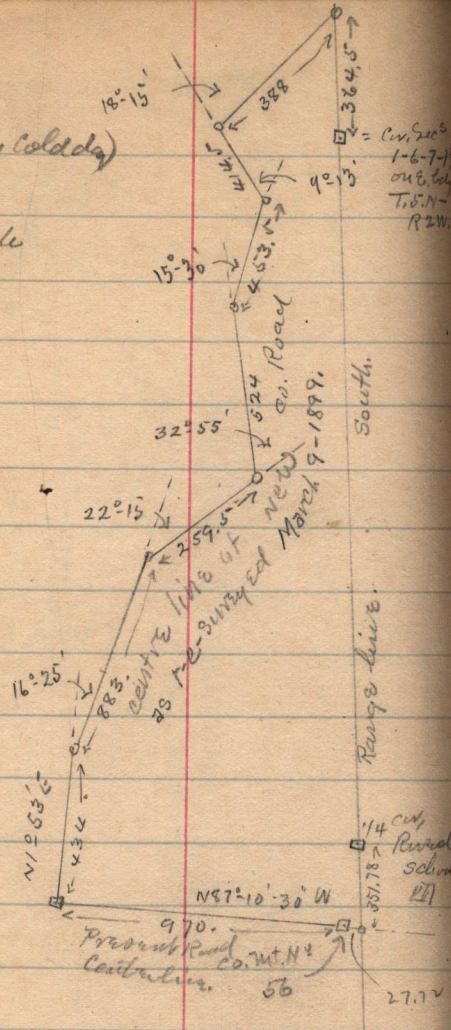


# Weber Co

March 9-1899 (Very Cold day)

Revised the location of the center line of the New Road from Berardale N. intersecting Sugar Nodes.



angle left on to Sec. line

20° 33'

N 20° 33' E

46 + 12

N.M. Cor. Sec. 26, T. 7, N.

1/4 Cor on W line 2'

Cor. Secs 1-6-7-8 on E. side T. 5. N. R. 2 W.

cut Revised school [?]

27.1 v